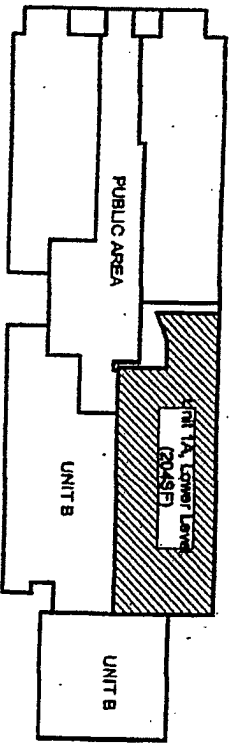
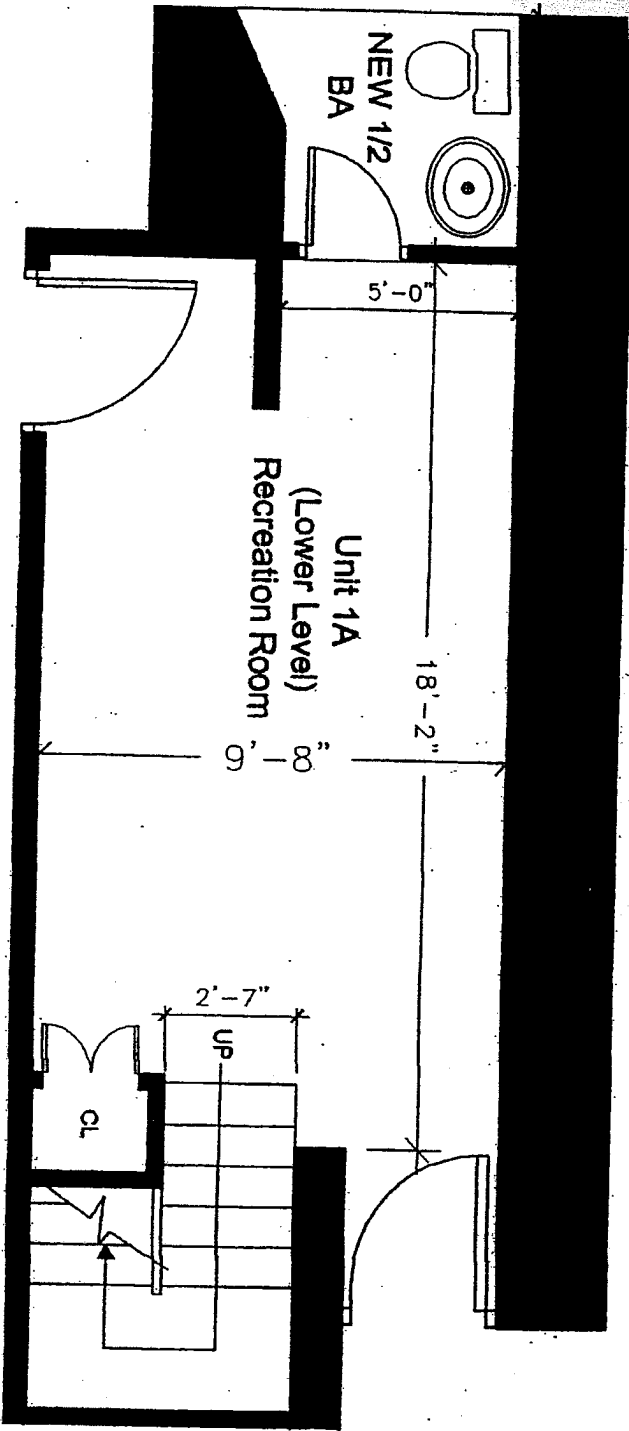


DIMENSIONS OF UNITS:

SQUARE FOOTAGE INDICATED ARE CALCULATED FROM DIMENSIONS WHICH ARE APPROXIMATE AND ARE LOCATED (i) APPROXIMATELY TO THE OUTSIDE FACE OF THE BRICK OR MASONRY WORK AT THE EXTERIOR WALLS OF THE BUILDING, (ii) APPROXIMATELY TO THE CORRIDOR SIDE OF THE MASONRY OR SHEETROCK WALLS OR PARTITIONS DIVIDING THE UNITS FROM CORRIDORS, STAIRS AND OTHER MECHANICAL SPACES AND (iii) WHERE MASONRY OR SHEETROCK WORK DIVIDES UNITS, APPROXIMATELY TO THE CENTERLINE OF THE MASONRY OR SHEETROCK WORK OF THE WALLS AND PARTITIONS DIVIDING THE UNITS.

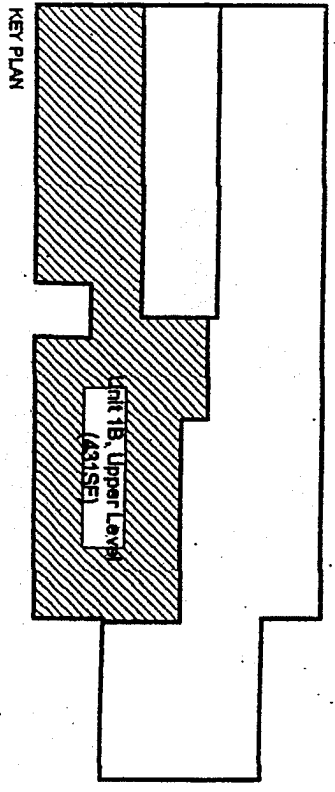
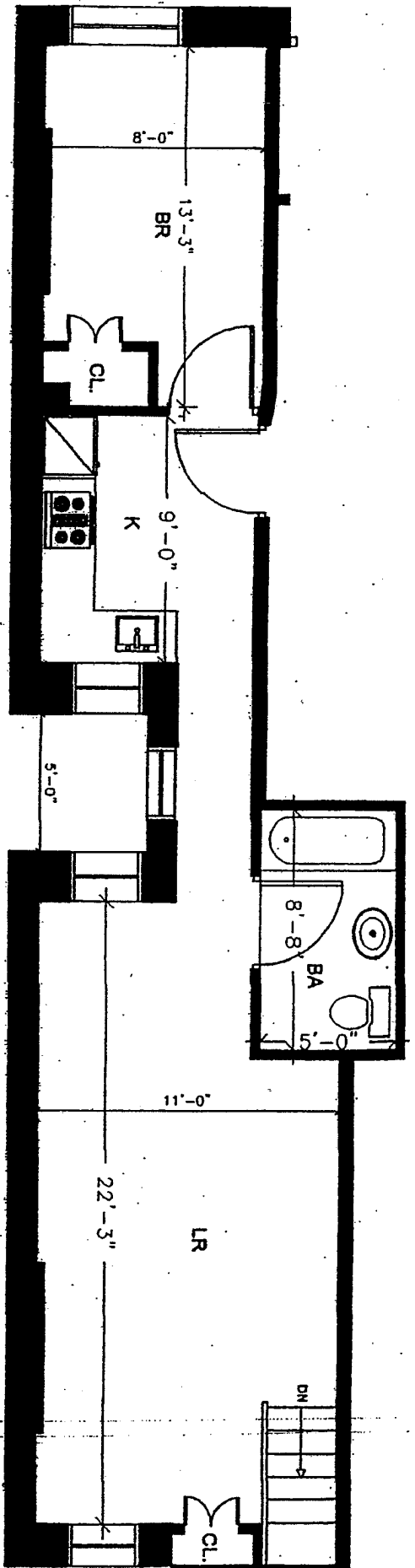
104 E 98TH ST.
FIRST FLOOR, UNIT 1A, UPPER LEVEL



DIMENSIONS OF UNITS:

SQUARE FOOTAGE INDICATED ARE CALCULATED FROM DIMENSIONS WHICH ARE APPROXIMATE AND ARE LOCATED (I) APPROXIMATELY TO THE OUTSIDE FACE OF THE BRICK OR MASONRY WORK AT THE EXTERIOR WALLS OF THE BUILDING, (II) APPROXIMATELY TO THE CORRIDOR SIDE OF THE MASONRY OR SHEETROCK WALLS OR PARTITIONS DIVIDING THE UNITS FROM CORRIDORS, STAIRS AND OTHER MECHANICAL SPACES AND (III) WHERE MASONRY OR SHEETROCK WORK DIVIDES UNITS, APPROXIMATELY TO THE CENTERLINE OF THE MASONRY OR SHEETROCK WORK OF THE WALLS AND PARTITIONS DIVIDING THE UNITS.

104 E 98TH ST.
UNIT 1A, LOWER LEVEL

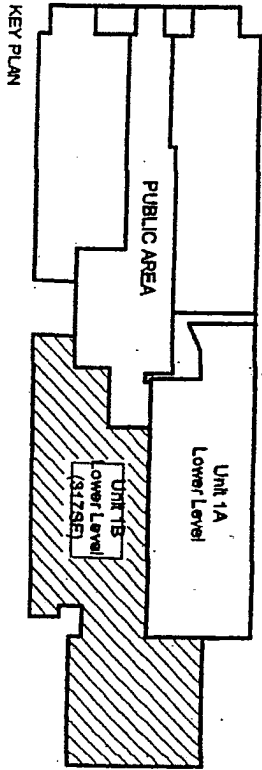
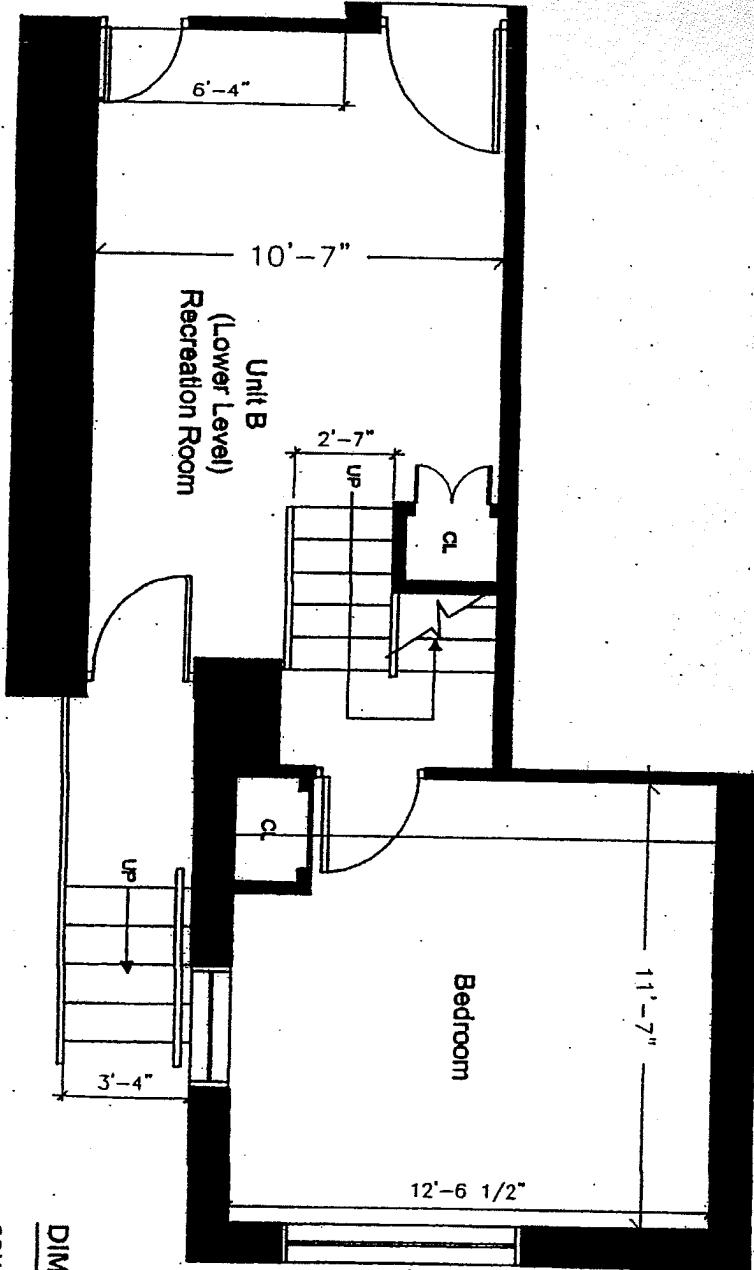


KEY PLAN

DIMENSIONS OF UNITS:

SQUARE FOOTAGE INDICATED ARE CALCULATED FROM DIMENSIONS WHICH ARE APPROXIMATE AND ARE LOCATED (I) APPROXIMATELY TO THE OUTSIDE FACE OF THE BRICK OR MASONRY WORK AT THE EXTERIOR WALLS OF THE BUILDING, (II) APPROXIMATELY TO THE COORIDOR SIDE OF THE MASONRY OR SHEETROCK WALLS OR PARTITIONS DIVIDING THE UNITS FROM CORRIDORS, STAIRS AND OTHER MECHANICAL SPACES AND (III) WHERE MASONRY OR SHEETROCK WORK DIVIDES UNITS, APPROXIMATELY TO THE CENTERLINE OF THE MASONRY OR SHEETROCK WORK OF THE WALLS AND PARTITIONS DIVIDING THE UNITS.

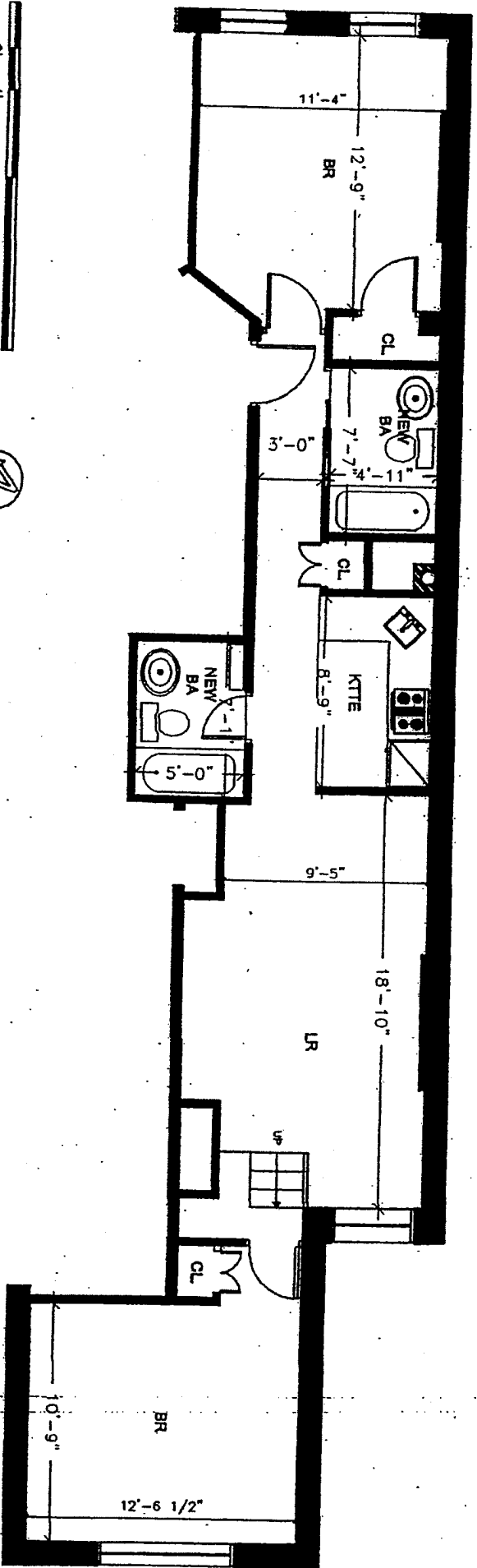
104 E 98TH ST.
FIRST FLOOR, UNIT 1B, UPPER LEVEL



DIMENSIONS OF UNITS:

SQUARE FOOTAGE INDICATED ARE CALCULATED FROM DIMENSIONS WHICH ARE APPROXIMATE AND ARE LOCATED (I) APPROXIMATELY TO THE OUTSIDE FACE OF THE BRICK OR MASONRY WORK AT THE EXTERIOR WALLS OF THE BUILDING, (II) APPROXIMATELY TO THE CORRIDOR SIDE OF THE MASONRY OR SHEETROCK WALLS OR PARTITIONS DIVIDING THE UNITS FROM CORRIDORS, STAIRS AND OTHER MECHANICAL SPACES AND (III) WHERE MASONRY OR SHEETROCK WORK DIVIDES UNITS, APPROXIMATELY TO THE CENTERLINE OF THE MASONRY OR SHEETROCK WORK OF THE WALLS AND PARTITIONS DIVIDING THE UNITS.

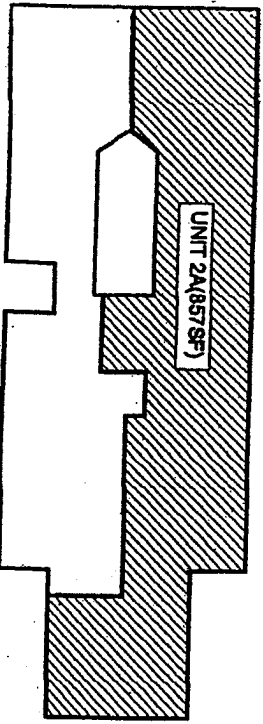
104 E 98TH ST.
UNIT 1B, LOWER LEVEL



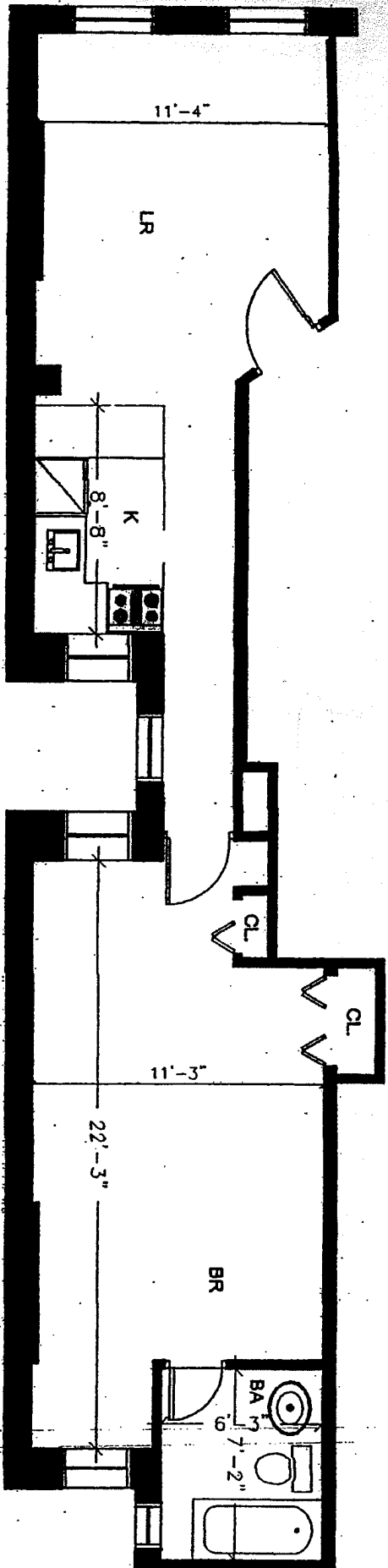
DIMENSIONS OF UNITS:

SQUARE FOOTAGE INDICATED ARE CALCULATED FROM DIMENSIONS WHICH ARE APPROXIMATE AND ARE LOCATED (I) APPROXIMATELY TO THE OUTSIDE FACE OF THE BRICK OR MASONRY WORK AT THE EXTERIOR WALLS OF THE BUILDING, (II) APPROXIMATELY TO THE CORRIDOR SIDE OF THE MASONRY OR SHEETROCK WALLS OR PARTITIONS DIVIDING THE UNITS FROM CORRIDORS, STAIRS AND OTHER MECHANICAL SPACES AND (III) WHERE MASONRY OR SHEETROCK WORK DIVIDES UNITS, APPROXIMATELY TO THE CENTERLINE OF THE MASONRY OR SHEETROCK WORK OF THE WALLS AND PARTITIONS DIVIDING THE UNITS.

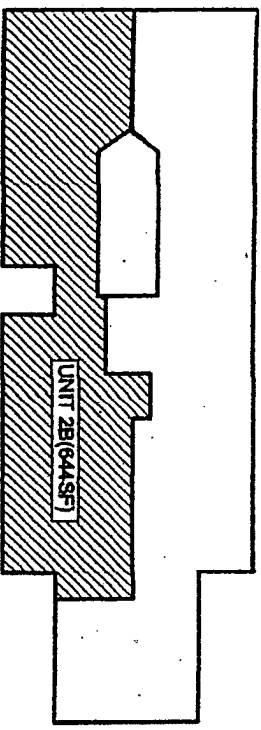
104 E 98TH ST.
SECOND FLOOR, UNIT 2A



KEY PLAN



218

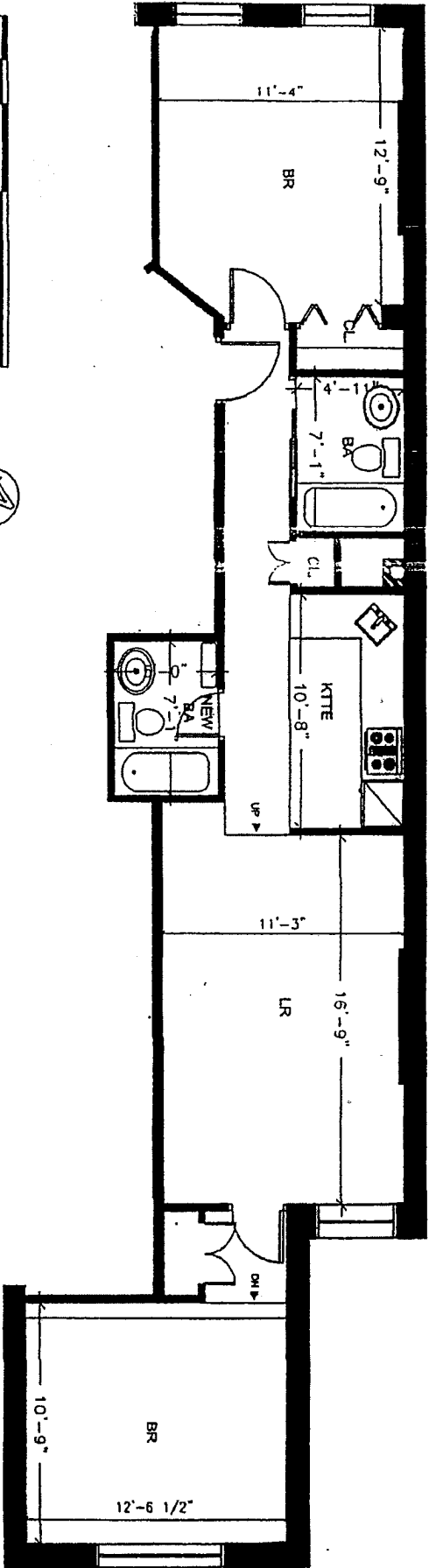


KEY PLAN

DIMENSIONS OF UNITS:

SQUARE FOOTAGE INDICATED ARE CALCULATED FROM DIMENSIONS WHICH ARE APPROXIMATE AND ARE LOCATED (I) APPROXIMATELY TO THE OUTSIDE FACE OF THE BRICK OR MASONRY WORK AT THE EXTERIOR WALLS OF THE BUILDING, (II) APPROXIMATELY TO THE CORRIDOR SIDE OF THE MASONRY OR SHEETROCK WALLS OR PARTITIONS DIVIDING THE UNITS FROM CORRIDORS, STAIRS AND OTHER MECHANICAL SPACES AND (III) WHERE MASONRY OR SHEETROCK WORK DIVIDES UNITS, APPROXIMATELY TO THE CENTERLINE OF THE MASONRY OR SHEETROCK WORK OF THE WALLS AND PARTITIONS DIVIDING THE UNITS.

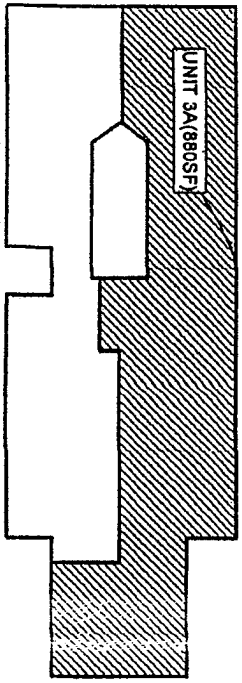
104 E 98TH ST.
SECOND FLOOR, UNIT 2B



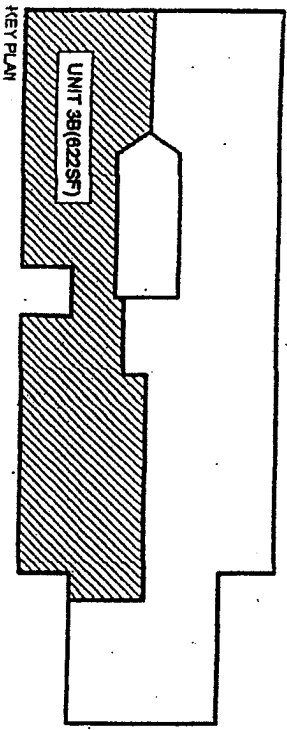
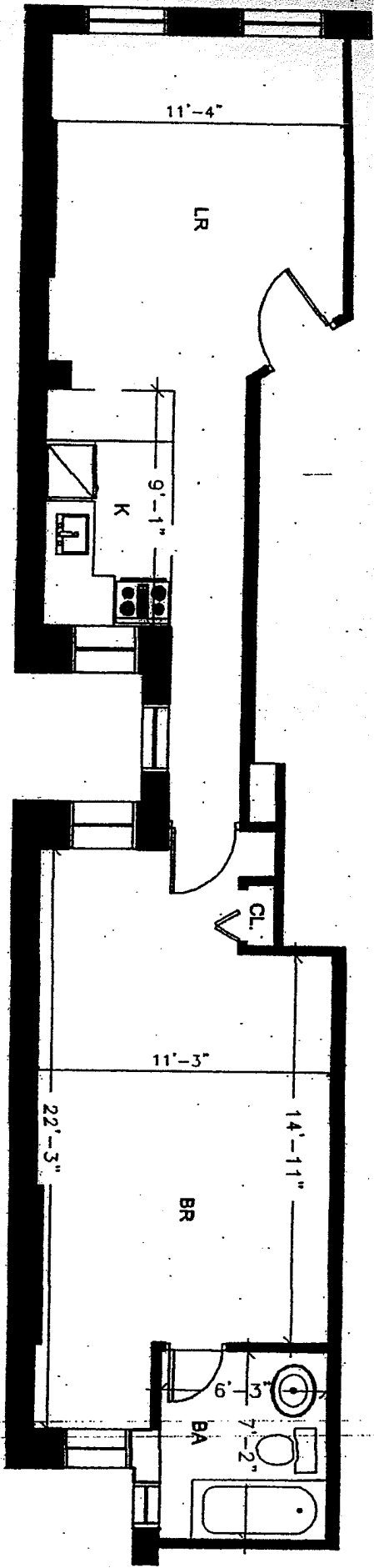
DIMENSIONS OF UNITS:

SQUARE FOOTAGE INDICATED ARE CALCULATED FROM DIMENSIONS WHICH ARE APPROXIMATE AND ARE LOCATED (i) APPROXIMATELY TO THE OUTSIDE FACE OF THE BRICK OR MASONRY WORK AT THE EXTERIOR WALLS OF THE BUILDING, (ii) APPROXIMATELY TO THE CORRIDOR SIDE OF THE MASONRY OR SHEETROCK WALLS OR PARTITIONS DIVIDING THE UNITS FROM CORRIDORS, STAIRS AND OTHER MECHANICAL SPACES AND (iii) WHERE MASONRY OR SHEETROCK WORK DIVIDES UNITS, APPROXIMATELY TO THE CENTERLINE OF THE MASONRY OR SHEETROCK WORK OF THE WALLS AND PARTITIONS DIVIDING THE UNITS.

104 E 98TH ST.
THIRD FLOOR, UNIT 3A



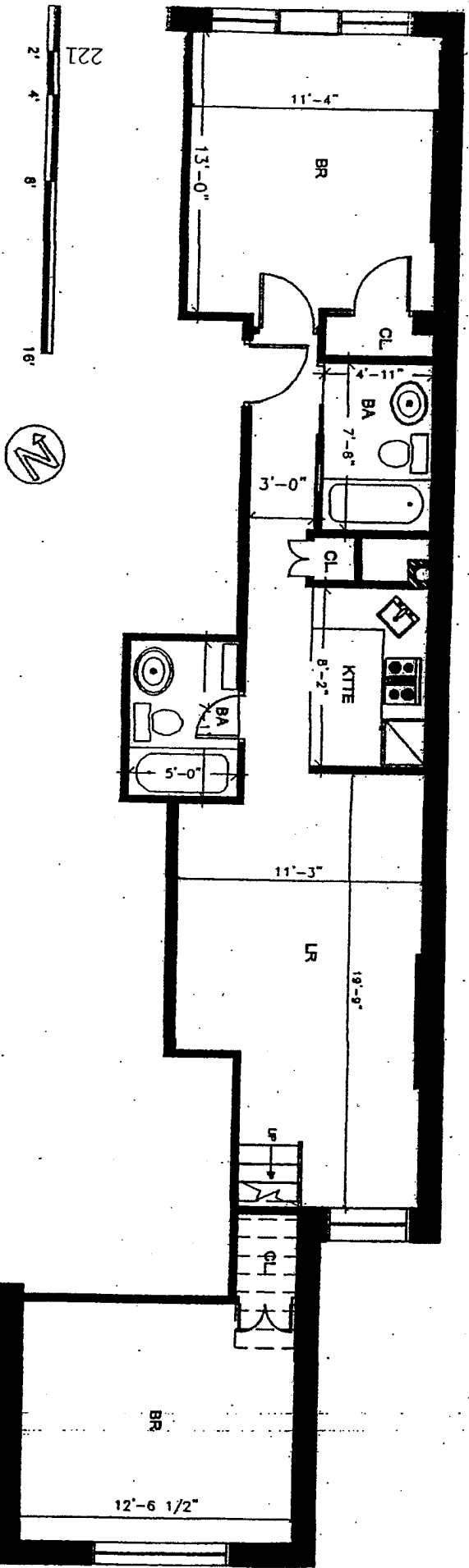
KEY PLAN



DIMENSIONS OF UNITS:

SQUARE FOOTAGE INDICATED ARE CALCULATED FROM DIMENSIONS WHICH ARE APPROXIMATE AND ARE LOCATED (I) APPROXIMATELY TO THE OUTSIDE FACE OF THE BRICK OR MASONRY WORK AT THE EXTERIOR WALLS OF THE BUILDING, (II) APPROXIMATELY TO THE CORRIDOR SIDE OF THE MASONRY OR SHEETROCK WALLS OR PARTITIONS DIVIDING THE UNITS FROM CORRIDORS, STAIRS AND OTHER MECHANICAL SPACES AND (III) WHERE MASONRY OR SHEETROCK WORK DIVIDES UNITS, APPROXIMATELY TO THE CENTERLINE OF THE MASONRY OR SHEETROCK WORK OF THE WALLS AND PARTITIONS DIVIDING THE UNITS.

104 E 98TH ST.
THIRD FLOOR, UNIT 3B

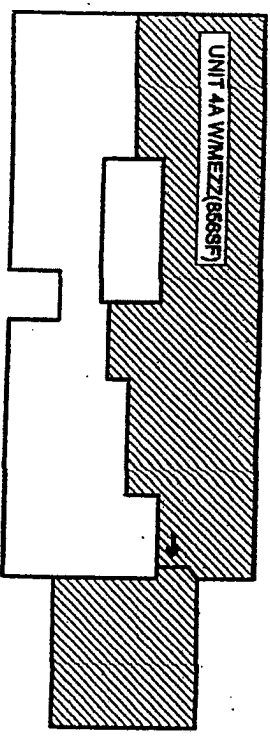


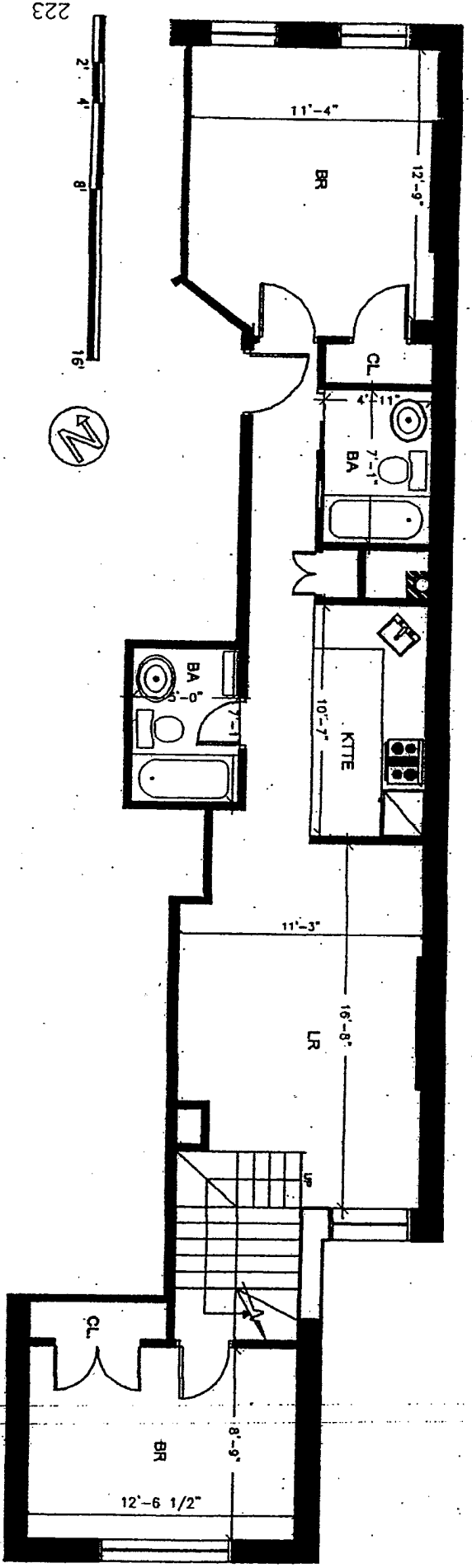
DIMENSIONS OF UNITS:

SQUARE FOOTAGE INDICATED ARE CALCULATED FROM DIMENSIONS WHICH ARE APPROXIMATE AND ARE LOCATED (I) APPROXIMATELY TO THE OUTSIDE FACE OF THE BRICK OR MASONRY WORK AT THE EXTERIOR WALLS OF THE BUILDING, (II) APPROXIMATELY TO THE CORRIDOR SIDE OF THE MASONRY OR SHEETROCK WALLS OR PARTITIONS DIVIDING THE UNITS FROM CORRIDORS, STAIRS AND OTHER MECHANICAL SPACES AND (III) WHERE MASONRY OR SHEETROCK WORK DIVIDES UNITS, APPROXIMATELY TO THE CENTERLINE OF THE MASONRY OR SHEETROCK WORK OF THE WALLS AND PARTITIONS DIVIDING THE UNITS.

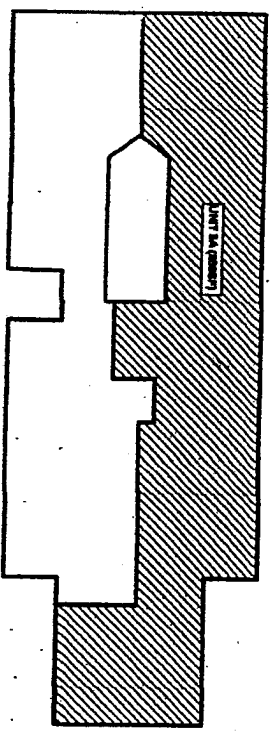
104 E 98TH ST.
FOURTH FLOOR, UNIT 4A

KEY PLAN





223

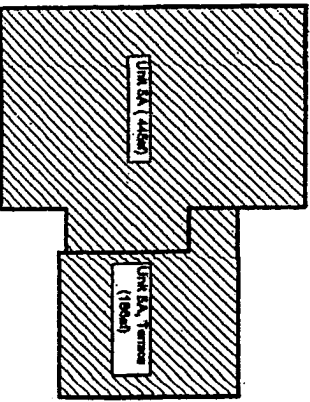
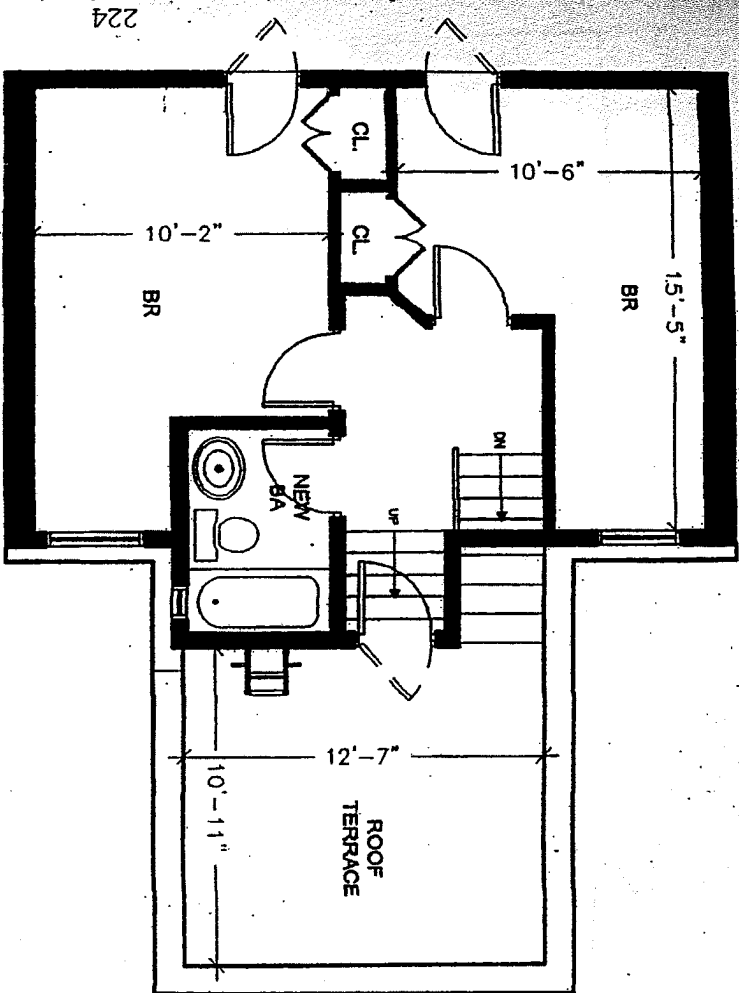


KEY PLAN

DIMENSIONS OF UNITS:

SQUARE FOOTAGE INDICATED ARE CALCULATED FROM DIMENSIONS WHICH ARE APPROXIMATE AND ARE LOCATED (i) APPROXIMATELY TO THE OUTSIDE FACE OF THE BRICK OR MASONRY WORK AT THE EXTERIOR WALLS OF THE BUILDING, (ii) APPROXIMATELY TO THE CORRIDOR SIDE OF THE MASONRY OR SHEETROCK WALLS OR PARTITIONS DIVIDING THE UNITS FROM CORRIDORS, STAIRS AND OTHER MECHANICAL SPACES AND (iii) WHERE MASONRY OR SHEETROCK WORK DIVIDES UNITS, APPROXIMATELY TO THE CENTERLINE OF THE MASONRY OR SHEETROCK WORK OF THE WALLS AND PARTITIONS DIVIDING THE UNITS.

104 E 98TH ST.
FIFTH FLOOR, UNIT 5A

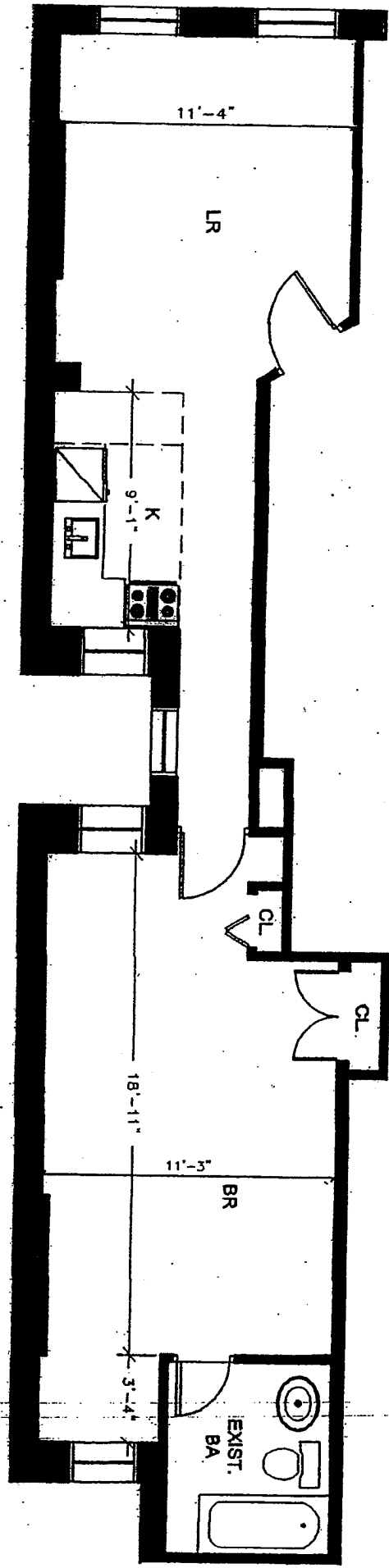


KEY PLAN

DIMENSIONS OF UNITS:

SQUARE FOOTAGE INDICATED ARE CALCULATED FROM DIMENSIONS WHICH ARE APPROXIMATE AND ARE LOCATED (i) APPROXIMATELY TO THE OUTSIDE FACE OF THE BRICK OR MASONRY WORK AT THE EXTERIOR WALLS OF THE BUILDING, (ii) APPROXIMATELY TO THE CORRIDOR SIDE OF THE MASONRY OR SHEETROCK WALLS OR PARTITIONS DIVIDING THE UNITS FROM CORRIDORS, STAIRS AND OTHER MECHANICAL SPACES AND (iii) WHERE MASONRY OR SHEETROCK WORK DIVIDES UNITS, APPROXIMATELY TO THE CENTERLINE OF THE MASONRY OR SHEETROCK WORK OF THE WALLS AND PARTITIONS DIVIDING THE UNITS.

104 E 98TH ST.
 FIFTH FLOOR, UNIT 5A, PENTHOUSE



225



DIMENSIONS OF UNITS:

SQUARE FOOTAGE INDICATED ARE CALCULATED FROM DIMENSIONS WHICH ARE APPROXIMATE AND ARE LOCATED (i) APPROXIMATELY TO THE OUTSIDE FACE OF THE BRICK OR MASONRY WORK AT THE EXTERIOR WALLS OF THE BUILDING, (ii) APPROXIMATELY TO THE CORRIDOR SIDE OF THE MASONRY OR SHEETROCK WALLS OR PARTITIONS DIVIDING THE UNITS FROM CORRIDORS, STAIRS AND OTHER MECHANICAL SPACES AND (iii) WHERE MASONRY OR SHEETROCK WORK DIVIDES UNITS, APPROXIMATELY TO THE CENTERLINE OF THE MASONRY OR SHEETROCK WORK OF THE WALLS AND PARTITIONS DIVIDING THE UNITS.

104 E 98TH ST.
FIFTH FLOOR, UNIT 5B

